

# Storage Tank Inspection

TesTex offer a comprehensive storage tank inspection service, including EEMUA 159 & API 653 assessment, as often required by regulatory bodies & insurers.

We inspect thousands of storage tanks across the UK & abroad every single year, why not take advantage of our experience and expertise.

## Benefits

- EEMUA 159 / API 653 Inspection including Calculations & Recommendations
- Tank Floor Scanning & Mapping
- Tank Floors: Distinguish between topside and bottom side corrosion
- Tank Floors: Scan through linings and coatings
- Tanks Floors: Maximum penetration depth of up to 25mm + lining thickness using the TesTex Falcon-S floor scanner
- Shell Survey using robotic crawler for remote thickness checking
- Inspect welds through linings and coatings
- Use of Magnetic Particle, Dye Penetrant, Ultrasonic, Eddy Current & Visual inspection techniques
- Detailed Reporting, including appropriate repairs, inspection intervals, drawings etc.
- Post Repair Inspection with additional report

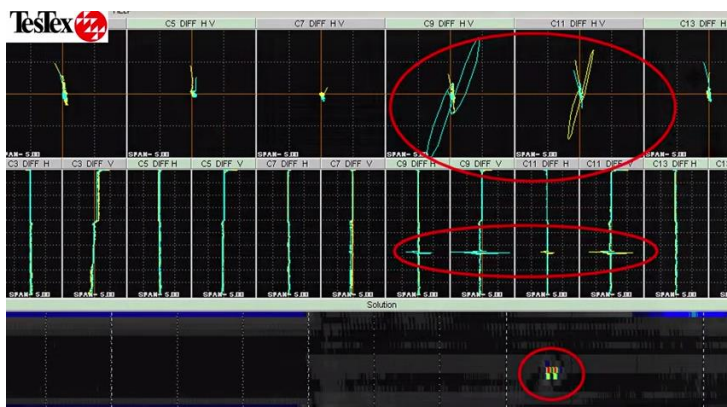


Figure 1: A sample waveform showing an indication with the Falcon-S Floor Scanner

